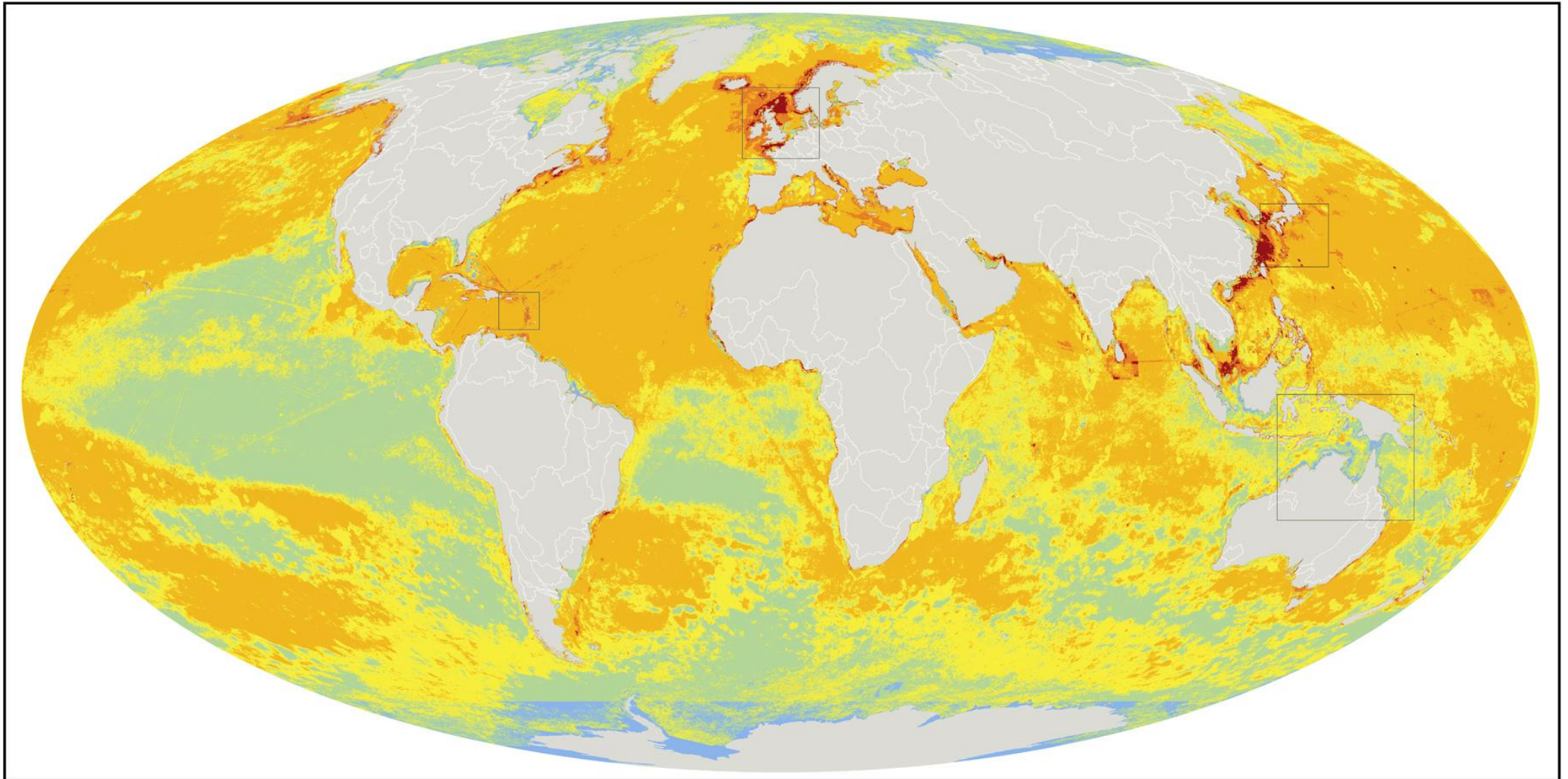


Where are the highest levels of ocean pollution?

The most polluted waters, shown in the map below, are around Thailand, Sri Lanka, China and the UK. For the Asian regions, this is because of the large amounts of industrial work are proceeding in those countries (see far left). For the UK, this is because there are many oil plants in action there. The least polluted are to the far North and the far South. This is because there is less human contact. There is also a very low impact around The Great Barrier Reef which is a highly protected area.



Very high impact High impact Medium high impact Medium low impact Low impact Very low impact